

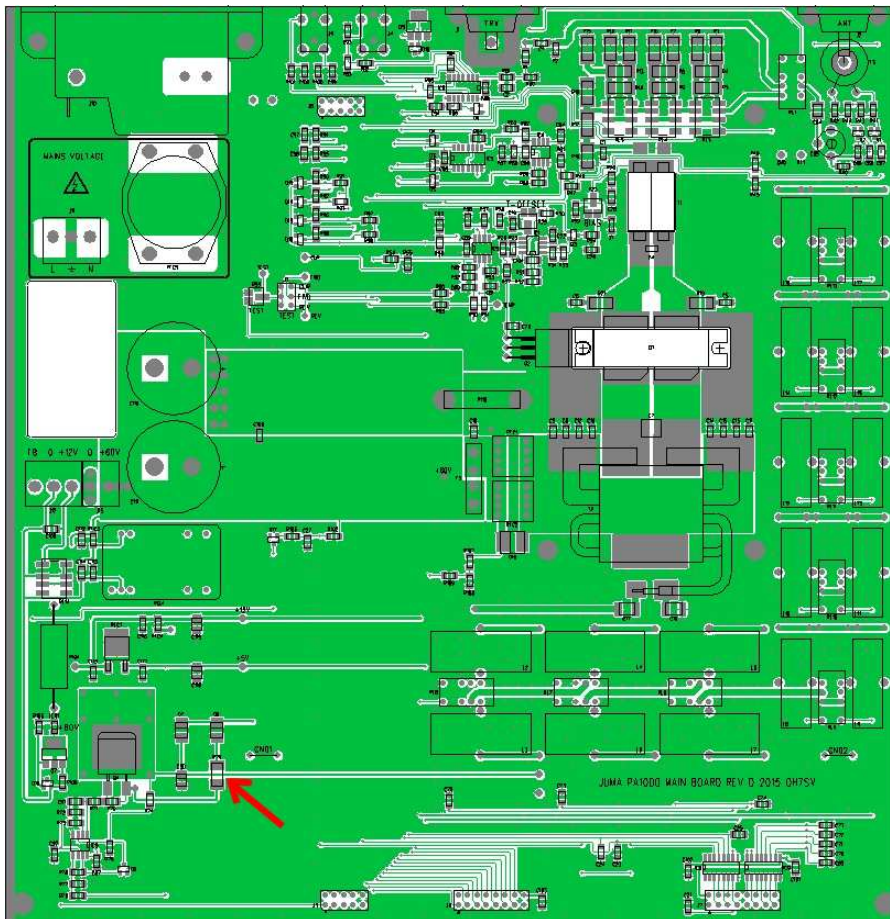
## JUMA PA1000 Idle Fan OFF Modification 2017-01-12

JUMA PA1000 has two fans, main fan for the LDMOS cooling and a secondary fan for the power supply. The secondary fan is running all the time in the amplifiers delivered before August 2016. The idle power dissipation is very low and the secondary fan idle can be modified to OFF when the LDMOS temperature is less than 30°C. If your JUMA PA1000 is older than August 2016 you may want to do this idle fan OFF modification. It will make the amplifier totally noiseless after cool down and it is not collecting dust. (Note. "FAN MAX RPM AT 90°C")

Check first if your PA1000 is already modified to idle fan OFF. Set "FAN MAX RPM AT 90°C". When the amplifier temperature is lower than 30°C you should not hear any fan noise if the modification is already done. If you hear the idle fan noise you can do the following modification.

### Modification instruction

1. Switch OFF the amplifier and disconnect the mains cable and wait at least one minute!
2. Remove top cover
  - a. Loosen the two handle screws but do not fully remove these screws (use bigger screw driver)
  - b. Remove four top cover screws located on the sides
  - c. Take off top cover
3. Remove big SMD resistor R79. Use two soldering irons or quickly heat up both ends of the resistor to remove.



Location of the resistor R79 on the main board

4. Replace top cover
  - a. Insert top cover
  - b. Pre-tighten top cover screws. Align top to the bottom cover and tighten the screws strictly
  - c. Align the handle and tighten the two screws very strictly (use bigger screw driver)
5. Modification completed