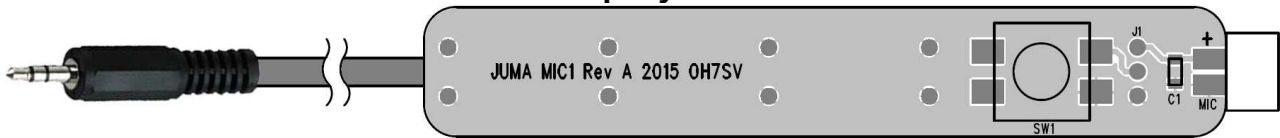
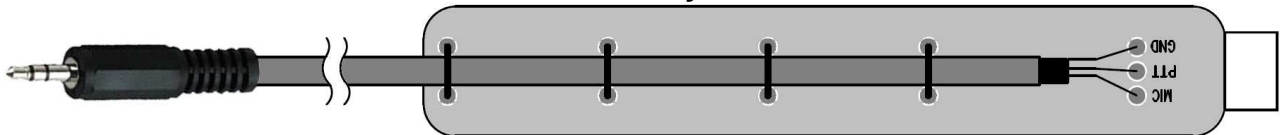


JUMA MIC1

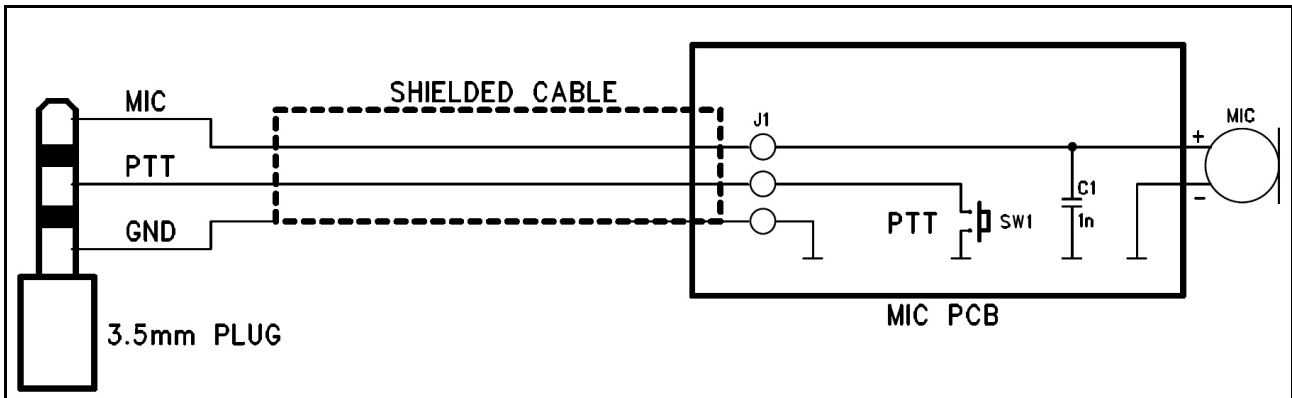
Top layout










Bottom layout



Schematics



JUMA MIC1 part list, update 2016-01-08

Part	Value	Qty	Description	Notes
MIC1 PCB		1	PCB	
C1	1n	1	Ceramic SMD capacitor size 1206 C0G	
Switch	DTSM21R Size 12mm x 12mm	1	For PTT	
MIC	Eg BCM9765P-44 (pin spacing 2.54mm)	1	Electret type	
Mic cable	2 wires + shield or 2 shielded cables L = 1m	1	Flexible cable	
Tinned copper wire	D=0.5-0.8mm, L=10cm	1	For cable fixing	
Plug	3.5 mm stereo plug	1	For mic cable	
MIC Windshield		1		